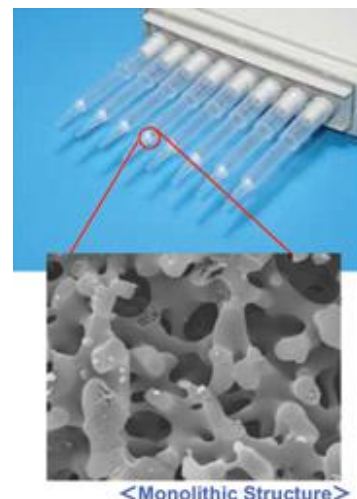


MonoTip™ TiO (Product Features)

Enrichment of Phosphopeptides Using Pipetting Method

MonoTip TiO is a tip column packed with monolithic silica coated with titanium dioxide. It selectively traps phosphopeptides, which improves the detection and reduces the analysis time.

“MonoTip TiO” offers the convenience of rapid enrichment. It is still popular today, however, Phos-TiO columns which contain an advanced form of TiO₂ show superior performance. With Phos-TiO columns, simultaneous process of many individual samples are also available. For new customers, we recommend Phos-TiO products as the first choice.



Features

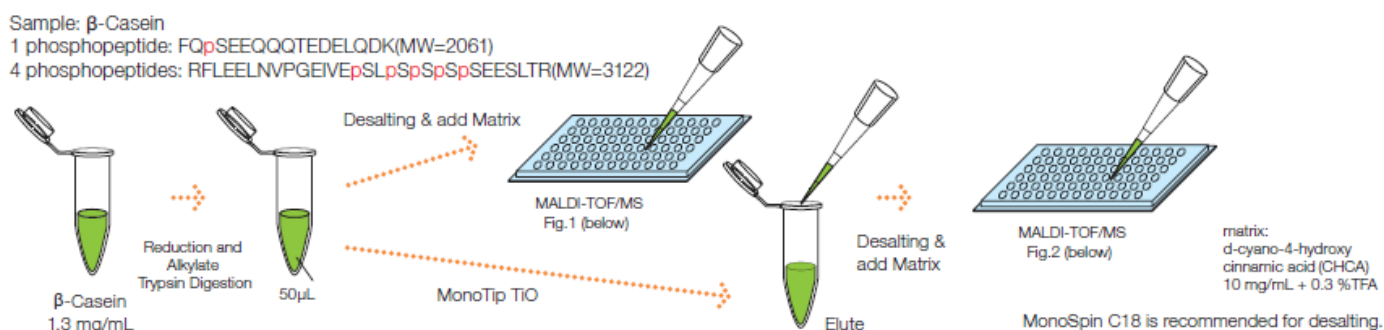
Easy to Operate

Digested protein samples are easily loaded, washed, and eluted using a pipette (single or multiple port).

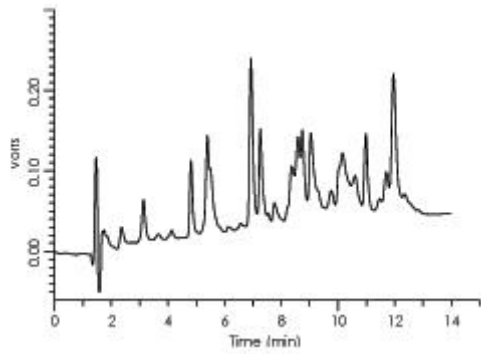
Useful For Relatively Large Samples

MonoTip TiO pipette tips are used for sample volumes of 50 – 200 µL, with approximately 5µg of phosphopeptide bound per tip. Taking advantage of porous structure of the monolith contained in these tips, samples can be eluted with small volumes, thereby phosphopeptides are substantially concentrated.

Application

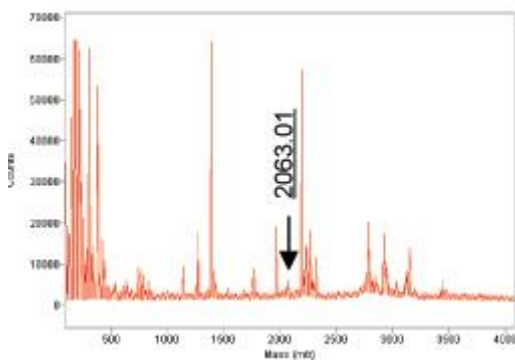


Before Purification: Almost no phosphopeptide was enriched.



HPLC

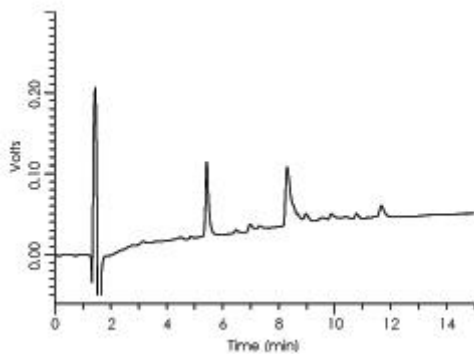
Various digested peptides were observed.



MALDI-TOF/MS (Voyager RP)

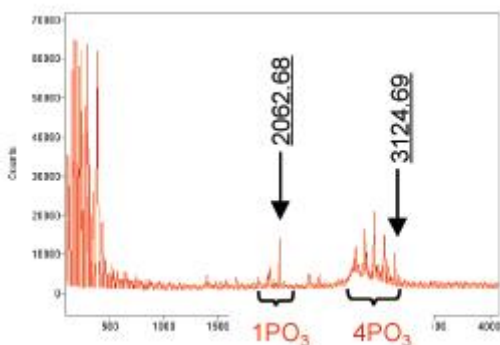
mono- Phosphopeptide was detected.

After purification: Phosphopeptides were selectively enriched.



HPLC

Only 2 digested peptides can be observed when using MonoTip TiO.



MALDI-TOF/MS (Voyager RP)

mono- Phosphopeptide and tetra-Phosphopeptide are clearly detected.